



INSTALLATION INSTRUCTIONS MODEL # SCS-21 ANCHORAGE CONNECTOR

PARTS LIST

- A. PRE-ASSEMBLED POLYPROPYLENE HOUSING c/w CONNECTOR BAR & COTTON PINS x 1.
(See Assembly Instructions For Detail)
- B. MACHINE SCREWS 1/4" x 2" Lg. (6.35 x 51 mm) x 4
FLAT WASHERS x 4.
CONCRETE INSERTS 1/4" x 2" Lg. (6.35 x 51 mm) x 4
- C. STABILIZER BRIDGE x 1
- D. COVER LID x 1

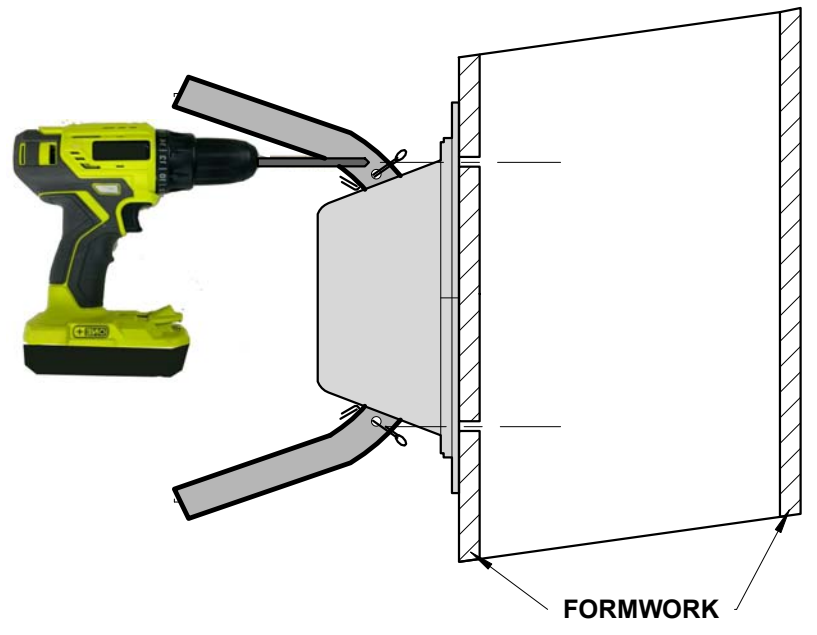


TOOLS LIST

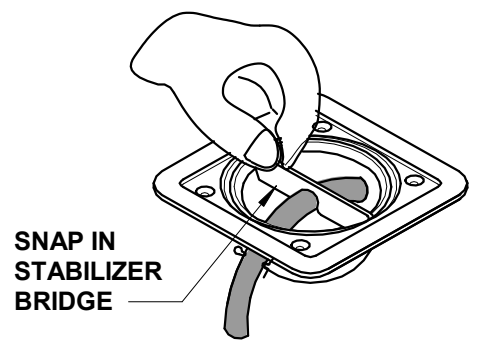
- A. SCREW DRIVER
- B. 1/4" (6.35mm) DRILL BIT
- C. DRILL



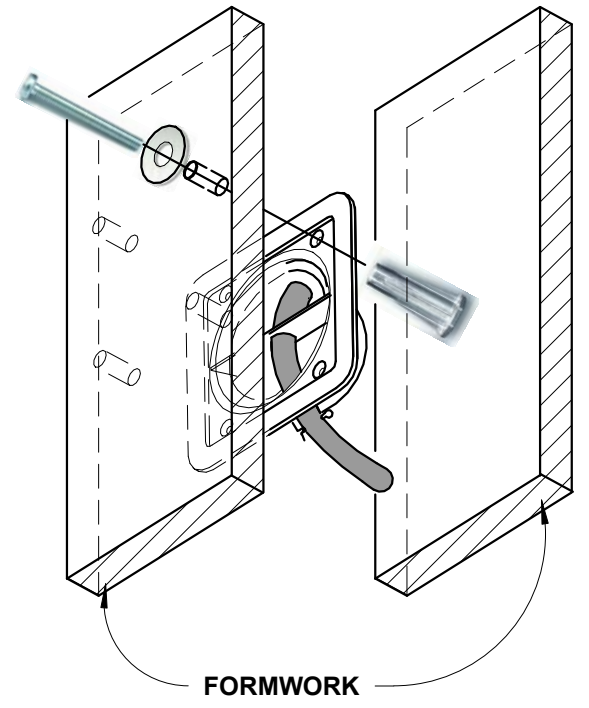
1. USE HOUSING AS TEMPLATE & DRILL HOLES INTO FORMWORK.



2. SNAP STABILIZER BRIDGE INTO GROOVE LOCATED IN WELL OF THE HOUSING.

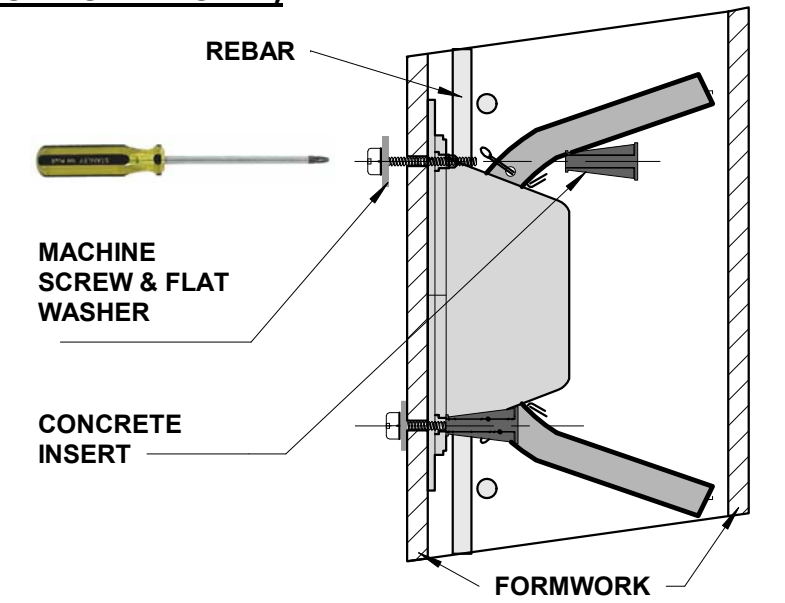


3.

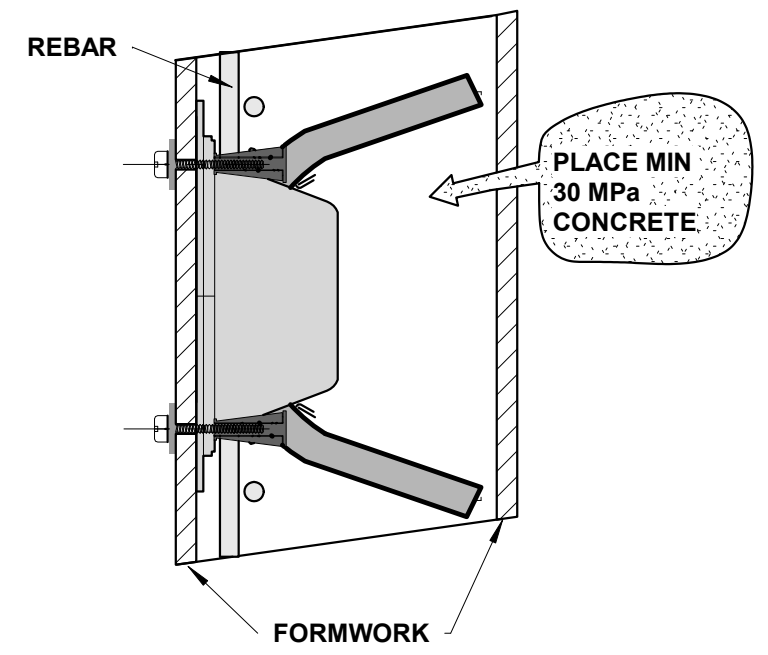


4. SECURE HOUSING C/W STABILIZER BRIDGE WITH THE FOUR MACHINE SCREWS, FLAT WASHERS, CONCRETE INSERTS.

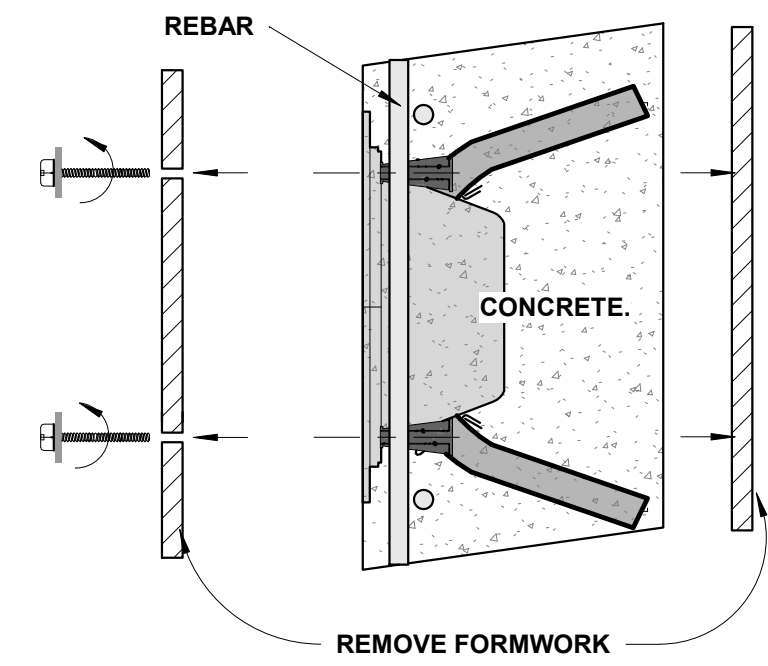
NOTE: MARK LOCATIONS CLEARLY ON OUTSIDE OF FORMWORK.)



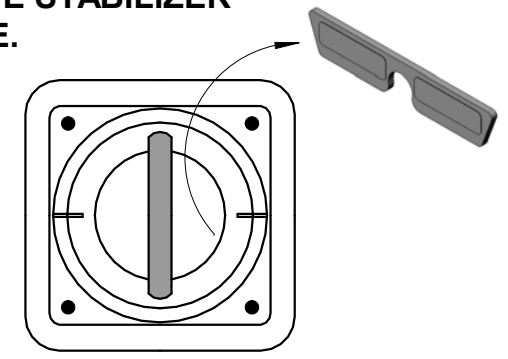
5. PLACE MIN 30 MPa REINFORCED CONCRETE INTO FORM AND VIBRATE CONCRETE.



6. REMOVE FORMWORK UPON CURING OF CONCRETE.



7. REMOVE STABILIZER BRIDGE.



8. SNAP COVER LID INTO PLACE.



9. WATERPROOFING, IF REQUIRED, BY OTHERS.